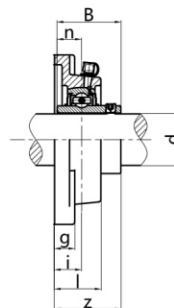
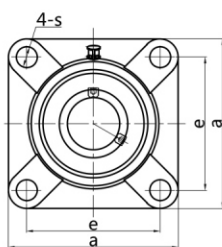


FJ-UCF2



| Unit NO. | Dimensions (mm / in.) | | | | | | | | | | | Bolt Size mm/in. | Bearing No. | Housing No. | Weight (kg) |
|-----------|-------------------------|---------|---------|---------|-------|---------|-------|---------|---------|--------|-------|---------------------|-------------|-------------|----------------|
| | d | a | e | i | g | l | s | z | t | B | n | | | | |
| FJ-UCF201 | 12 | 86 | 64 | 15 | 12 | 25.5 | 12 | 33.3 | 37.5 | 31 | 12.7 | M10 | FJ-UC201 | FJ-F201 | 0.59 |
| 201-8 | 1/2 | 3-3/8 | 2-33/64 | 19/32 | 15/32 | 1 | 15/32 | 1-5/16 | 1-31/64 | 1.2205 | 0.500 | 3/8 | FJ-UC201-8 | | 0.58 |
| FJ-UCF202 | 15 | 86 | 64 | 15 | 12 | 25.5 | 12 | 33.3 | 37.5 | 31 | 12.7 | M10 | FJ-UC202 | FJ-F202 | 0.58 |
| 202-9 | 9/16 | 3-3/8 | 2-33/64 | 19/32 | 15/32 | 1 | 15/32 | 1-5/16 | 1-31/64 | 1.2205 | 0.500 | 3/8 | FJ-UC202-9 | | 0.58 |
| 202-10 | 5/8 | | | | | | | | | | | | FJ-UC202-10 | | 0.58 |
| FJ-UCF203 | 17 | 86 | 64 | 15 | 12 | 25.5 | 12 | 33.3 | 37.5 | 31 | 12.7 | M10 | FJ-UC203 | FJ-F203 | 0.57 |
| 203-11 | 11/16 | 3-3/8 | 2-33/64 | 19/32 | 15/32 | 1 | 15/32 | 1-5/16 | 1-31/64 | 1.2205 | 0.500 | 3/8 | FJ-UC203-11 | | 0.56 |
| FJ-UCF204 | 20 | 86 | 64 | 15 | 12 | 25.5 | 12 | 33.3 | 37.5 | 31 | 12.7 | M10 | FJ-UC204 | FJ-F204 | 0.55 |
| 204-12 | 3/4 | 3-3/8 | 2-33/64 | 19/32 | 15/32 | 1 | 15/32 | 1-5/16 | 1-31/64 | 1.2205 | 0.500 | 3/8 | FJ-UC204-12 | | 0.55 |
| FJ-UCF205 | 25 | 95 | 70 | 16 | 14 | 27 | 12 | 35.8 | 40 | 34.1 | 14.3 | M10 | FJ-UC205 | FJ-F205 | 0.73 |
| 205-13 | 13/16 | 3-3/4 | 2-3/4 | 5/8 | 35/64 | 1-1/16 | 15/32 | 1-13/32 | 1-9/16 | 1.3425 | 0.563 | 3/8 | FJ-UC205-13 | | 0.77 |
| 205-14 | 7/8 | | | | | | | | | | | | FJ-UC205-14 | | 0.76 |
| 205-15 | 15/16 | | | | | | | | | | | | FJ-UC205-15 | | 0.74 |
| 205-16 | 1 | | | | | | | | | | | | FJ-UC205-16 | | 0.73 |
| FJ-UCF206 | 30 | 108 | 83 | 18 | 14 | 31 | 12 | 40.2 | 44.5 | 38.1 | 15.9 | M10 | FJ-UC206 | FJ-F206 | 1.02 |
| 206-17 | 1-1/16 | 4-1/4 | 3-17/64 | 45/64 | 35/64 | 1-7/32 | 15/32 | 1-19/32 | 1-3/4 | 1.5000 | 0.626 | 3/8 | FJ-UC206-17 | | 1.03 |
| 206-18 | 1-1/8 | | | | | | | | | | | | FJ-UC206-18 | | 1.04 |
| 206-19 | 1-3/16 | | | | | | | | | | | | FJ-UC206-19 | | 1.02 |
| 206-20 | 1-1/4 | | | | | | | | | | | | FJ-UC206-20 | | 1.01 |
| FJ-UCF207 | 35 | 117 | 92 | 19 | 16 | 34 | 14 | 44.4 | 48.5 | 42.9 | 17.5 | M12 | FJ-UC207 | FJ-F207 | 1.33 |
| 207-20 | 1-1/4 | 4-39/64 | 3-5/8 | 3/4 | 5/8 | 1-11/32 | 35/64 | 1-3/4 | 1-29/32 | 1.6890 | 0.689 | 7/16 | FJ-UC207-20 | | 1.40 |
| 207-21 | 1-5/16 | | | | | | | | | | | | FJ-UC207-21 | | 1.37 |
| 207-22 | 1-3/8 | | | | | | | | | | | | FJ-UC207-22 | | 1.34 |
| 207-23 | 1-7/16 | | | | | | | | | | | | FJ-UC207-23 | | 1.31 |
| FJ-UCF208 | 40 | 130 | 102 | 21 | 16 | 36 | 16 | 51.2 | 55.5 | 49.2 | 19 | M14 | FJ-UC208 | FJ-F208 | 1.67 |
| 208-24 | 1-1/2 | 5-1/8 | 4-1/64 | 53/64 | 5/8 | 1-27/64 | 5/8 | 2-1/64 | 2-3/16 | 1.9370 | 0.748 | 1/2 | FJ-UC208-24 | | 1.71 |
| 208-25 | 1-9/16 | | | | | | | | | | | | FJ-UC208-25 | | 1.68 |
| FJ-UCF209 | 45 | 137 | 105 | 22 | 18 | 38 | 16 | 52.2 | 56.5 | 49.2 | 19 | M14 | FJ-UC209 | FJ-F209 | 2.00 |
| 209-26 | 1-5/8 | 5-13/32 | 4-9/64 | 55/64 | 45/64 | 1-1/2 | 5/8 | 2-1/16 | 2-7/32 | 1.9370 | 0.748 | 1/2 | FJ-UC209-26 | | 2.10 |
| 209-27 | 1-11/16 | | | | | | | | | | | | FJ-UC209-27 | | 2.06 |
| 209-28 | 1-3/4 | | | | | | | | | | | | FJ-UC209-28 | | 2.02 |
| FJ-UCF210 | 50 | 143 | 111 | 22 | 18 | 40 | 16 | 54.6 | 59.5 | 51.6 | 19 | M14 | FJ-UC210 | FJ-F210 | 2.32 |
| 210-29 | 1-13/16 | 5-5/8 | 4-3/8 | 55/64 | 23/32 | 1-9/16 | 5/8 | 2-5/32 | 2-11/32 | 2.0315 | 0.748 | 1/2 | FJ-UC210-29 | | 2.44 |
| 210-30 | 1-7/8 | | | | | | | | | | | | FJ-UC210-30 | | 2.39 |
| 210-31 | 1-15/16 | | | | | | | | | | | | FJ-UC210-31 | | 2.34 |
| 210-32 | 2 | | | | | | | | | | | | HS-UC210-32 | | 2.30 |
| FJ-UCF211 | 55 | 162 | 130 | 25 | 20 | 43 | 19 | 58.4 | 63 | 55.6 | 22.2 | M16 | FJ-UC211 | FJ-F211 | 3.12 |
| 211-32 | 2 | 6-3/8 | 5-1/8 | 63/64 | 45/64 | 1-11/16 | 3/4 | 2-5/16 | 2-31/64 | 2.1890 | 0.874 | 5/8 | HS-UC211-32 | | 3.27 |
| 211-33 | 2-1/16 | | | | | | | | | | | | FJ-UC211-33 | | 3.21 |
| 211-34 | 2-1/8 | | | | | | | | | | | | FJ-UC211-34 | | 3.17 |
| 211-35 | 2-3/16 | | | | | | | | | | | | FJ-UC211-35 | | 3.10 |
| FJ-UCF212 | 60 | 175 | 143 | 29 | 20 | 48 | 19 | 68.7 | 73.5 | 65.1 | 25.4 | M16 | FJ-UC212 | FJ-F212 | 3.95 |
| 212-36 | 2-1/4 | 6-57/64 | 5-5/8 | 1-9/64 | 25/32 | 1-57/64 | 3/4 | 2-45/64 | 2-57/64 | 2.5630 | 1.000 | 5/8 | FJ-UC212-36 | | 4.08 |
| 212-37 | 2-5/16 | | | | | | | | | | | | FJ-UC212-37 | | 4.00 |
| 212-38 | 2-3/8 | | | | | | | | | | | | FJ-UC212-38 | | 3.93 |
| 212-39 | 2-7/16 | | | | | | | | | | | | FJ-UC212-39 | | 3.86 |
| FJ-UCF213 | 65 | 187 | 149 | 30 | 22 | 50 | 19 | 69.7 | 74.5 | 65.1 | 25.4 | M16 | FJ-UC213 | FJ-F213 | 4.81 |
| 213-40 | 2-1/2 | 7-23/64 | 5-55/64 | 1-3/16 | 55/64 | 1-31/32 | 3/4 | 2-3/4 | 2-15/16 | 2.5630 | 1.000 | 5/8 | FJ-UC213-40 | | 4.90 |
| 213-41 | 2-9/16 | | | | | | | | | | | | FJ-UC213-41 | | 4.81 |
| FJ-UCF214 | 70 | 193 | 152 | 31 | 22 | 54 | 19 | 75.4 | 81.5 | 74.6 | 30.2 | M16 | FJ-UC214 | FJ-F214 | 5.42 |
| 214-42 | 2-5/8 | 7-19/32 | 5-63/64 | 1-7/32 | 55/64 | 2-1/8 | 3/4 | 2-31/32 | 3-13/64 | 2.9370 | 1.189 | 5/8 | FJ-UC214-42 | | 5.63 |
| 214-43 | 2-11/16 | | | | | | | | | | | | FJ-UC214-43 | | 5.53 |
| 214-44 | 2-3/4 | | | | | | | | | | | | FJ-UC214-44 | | 5.43 |
| FJ-UCF215 | 75 | 200 | 159 | 34 | 22 | 56 | 19 | 78.5 | 83.5 | 77.8 | 33.3 | M16 | FJ-UC215 | FJ-F215 | 5.94 |
| 215-45 | 2-13/16 | 7-7/8 | 6-17/64 | 1-11/32 | 55/64 | 2-7/32 | 3/4 | 3-3/32 | 3-9/32 | 3.0630 | 1.311 | 5/8 | FJ-UC215-45 | | 5.94 |
| 215-46 | 2-7/8 | | | | | | | | | | | | FJ-UC215-46 | | 6.19 |
| 215-47 | 2-15/16 | | | | | | | | | | | | FJ-UC215-47 | | 6.08 |
| 215-48 | 3 | | | | | | | | | | | | FJ-UC215-48 | | 5.88 |